

# CLEVERTOUCH®

## Buy Back

Get up to £250 cashback for your old equipment when you switch to Clevertouch.

Throughout September and October we're offering cashback through our **BUY BACK PROGRAMME.**

Your school can get up to £250 cashback for your old equipment when you switch to Clevertouch!

### How does it work?

Place your order with your reseller for a delivery/installation before 31st October 2020. We will arrange to collect your old equipment within 20 days.

Fill in our online form to qualify for cashback. The more Clevertouch screens you buy, the more cashback you get - there's no maximum limit as long as you have old replacements for us to remove.

### How is cashback awarded?

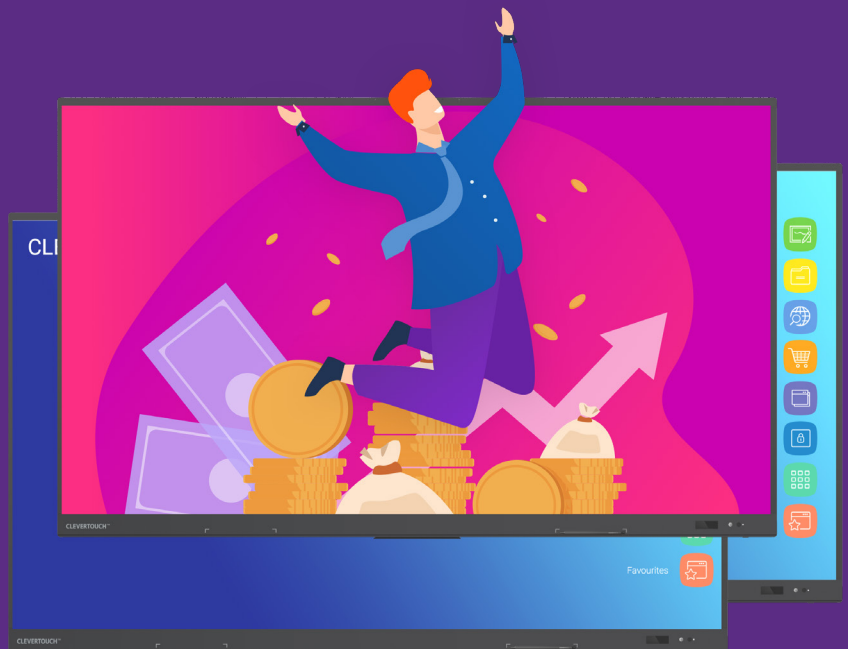
Earn up to £250 per screen!

IMPACT Plus™	IMPACT™
55" £150	N/A
65" £150	65" £100
75" £250	75" £150
86" £250	86" £200

Visit the link below to discover more:  
[clevertouch.com/uk/buy-back](http://clevertouch.com/uk/buy-back)



01622 769692  
[sales@ncstechnology.co.uk](mailto:sales@ncstechnology.co.uk)  
[www.ncstechnology.co.uk](http://www.ncstechnology.co.uk)



### The offer

Your IMPACT or IMPACT Plus must be delivered between 1 September to 31 October 2020.

You must fill in the cashback form within 30 days of delivery of your new IMPACT or IMPACT Plus.



### Your old equipment

You must keep your old equipment safe for 20 days - we will arrange collection during this period.

You will be given a collection number for each item - you must enter this number into the form for cashback to be awarded.

Old equipment can include projectors, interactive boards, and interactive displays.

To receive cashback you must supply old technology for each of the Clevertouch screens purchased.



### Delivery and Collection

Ten working days' notice must be given if there are any site access requirements.

If there is a failed delivery/collection as a result of any fault not due to Clevertouch or the delivery agent, you will be required to pay a £150 failed delivery/collection charge.

Delivery and collection times are estimated and not guaranteed.

Units will be delivered to and collected from the ground floor only unless special prior arrangements are made.